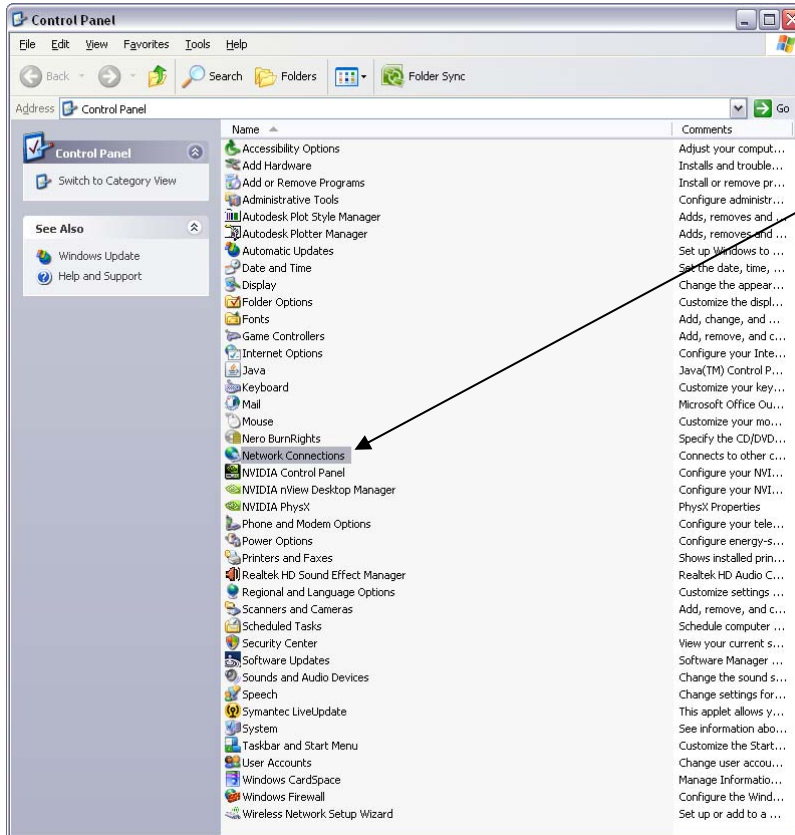
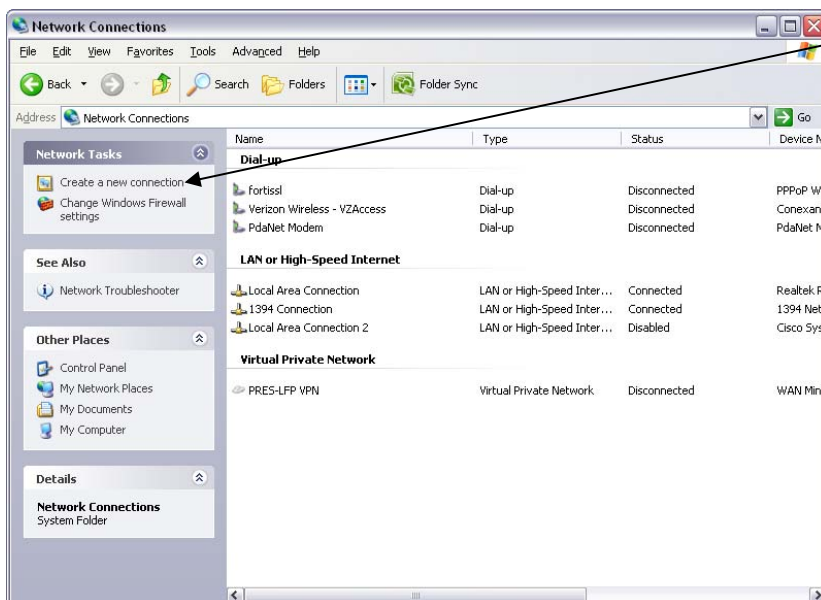


This guide covers how to setup a VPN connection in Windows XP. This guide assumes you have been giving the IP address and your user name and password.

First go to control panel and click on Network Connections



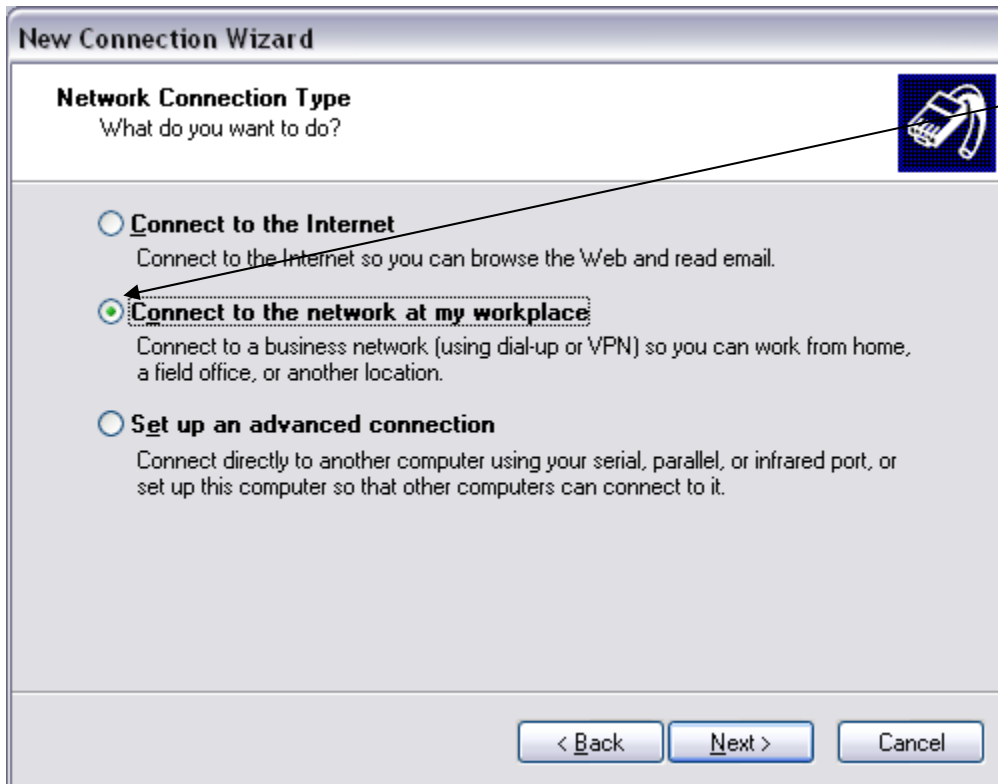
In Network Connections click on Create New Connection



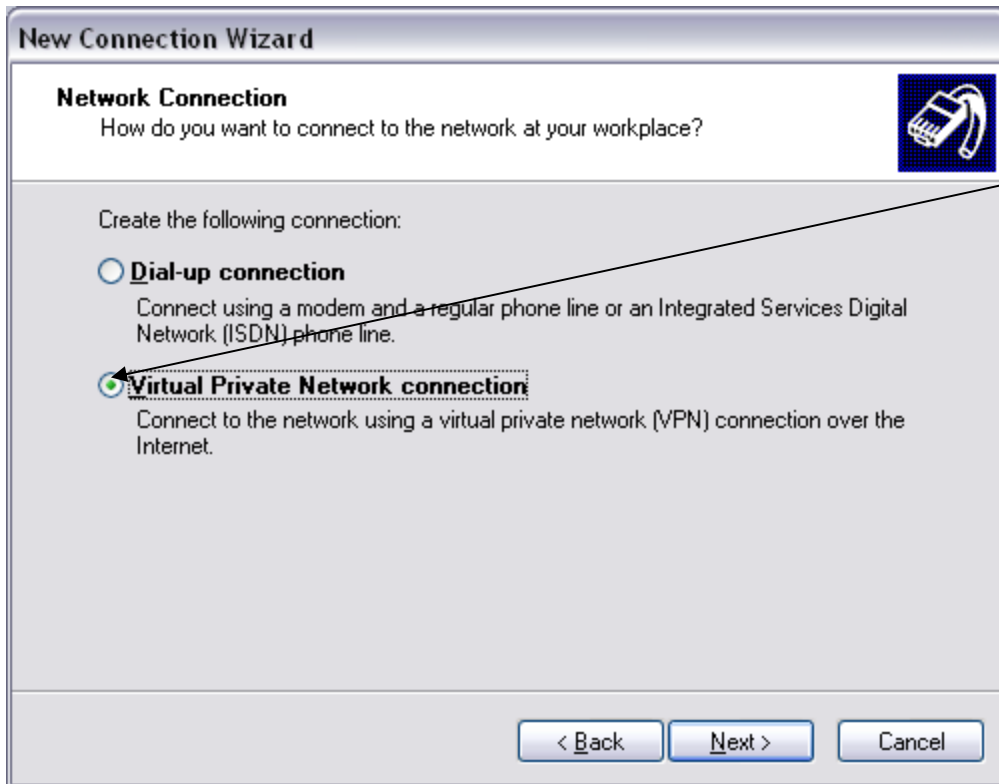
This will open the New Connection Wizard, click next to continue



Now select Connect to network at my workplace and click next



Now select Virtual Private Network (VPN) and click next



New Connection Wizard

Network Connection
How do you want to connect to the network at your workplace?

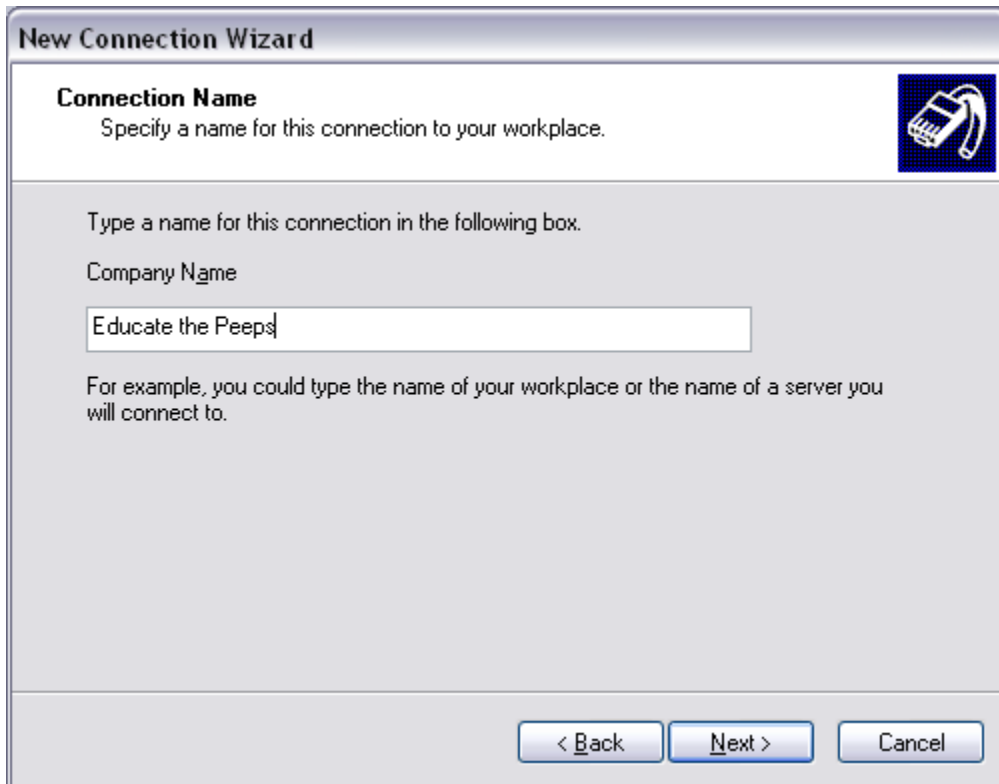
Create the following connection:

- Dial-up connection**
Connect using a modem and a regular phone line or an Integrated Services Digital Network (ISDN) phone line.
- Virtual Private Network connection**
Connect to the network using a virtual private network (VPN) connection over the Internet.

< Back Next > Cancel

The image shows a 'New Connection Wizard' window with a 'Network Connection' section. It asks 'How do you want to connect to the network at your workplace?'. There are two radio button options: 'Dial-up connection' and 'Virtual Private Network connection'. The 'Virtual Private Network connection' option is selected and highlighted with a dashed border. A black arrow points from the right side of the screen to the 'Virtual Private Network connection' radio button. At the bottom, there are three buttons: '< Back', 'Next >', and 'Cancel'.

Now enter your companies name or whatever you want to call the connection, then click next



New Connection Wizard

Connection Name
Specify a name for this connection to your workplace.

Type a name for this connection in the following box.

Company Name

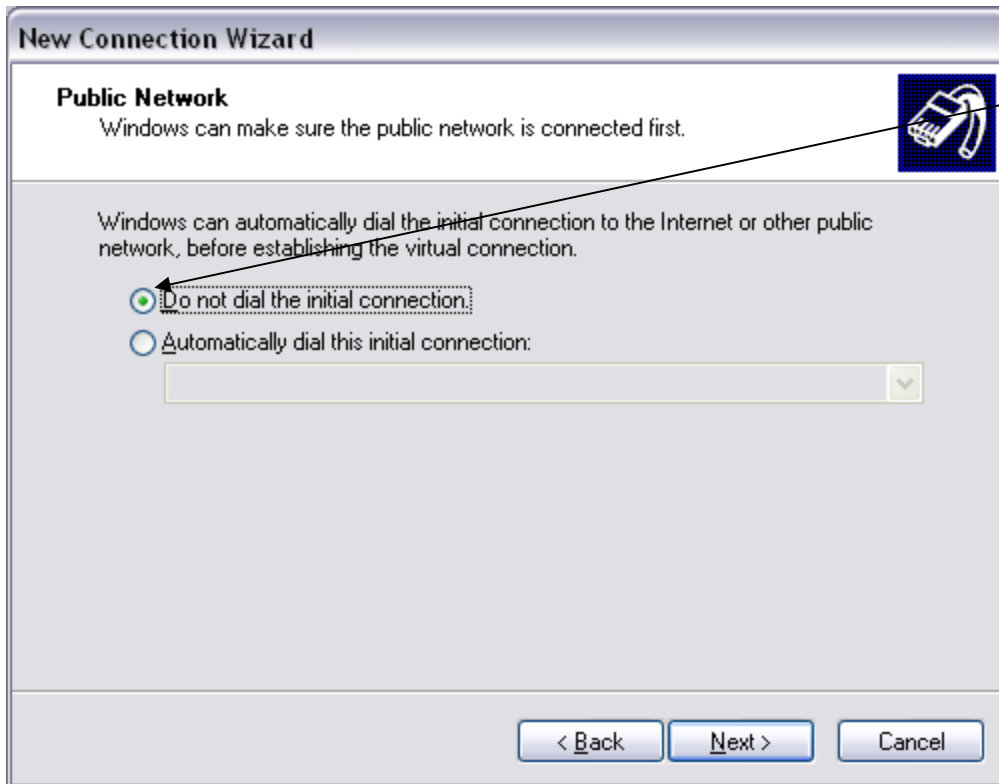
Educate the Peeps

For example, you could type the name of your workplace or the name of a server you will connect to.

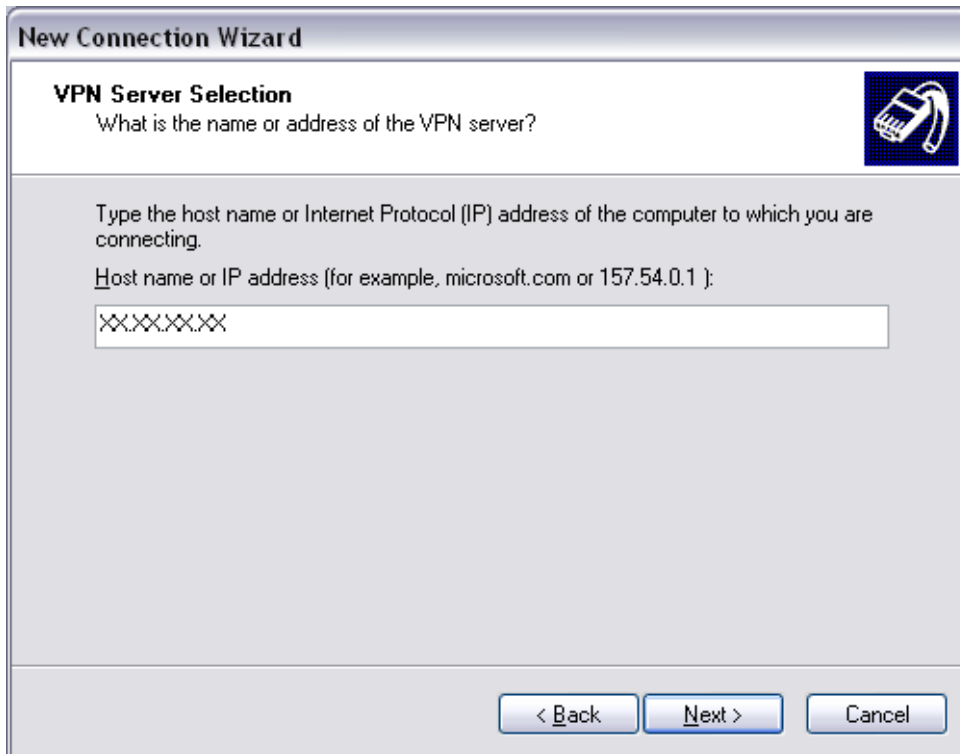
< Back Next > Cancel

The image shows a 'New Connection Wizard' window with a 'Connection Name' section. It asks 'Specify a name for this connection to your workplace.'. Below this, it says 'Type a name for this connection in the following box.' and 'Company Name'. There is a text input field containing the text 'Educate the Peeps'. Below the input field, it says 'For example, you could type the name of your workplace or the name of a server you will connect to.'. At the bottom, there are three buttons: '< Back', 'Next >', and 'Cancel'.

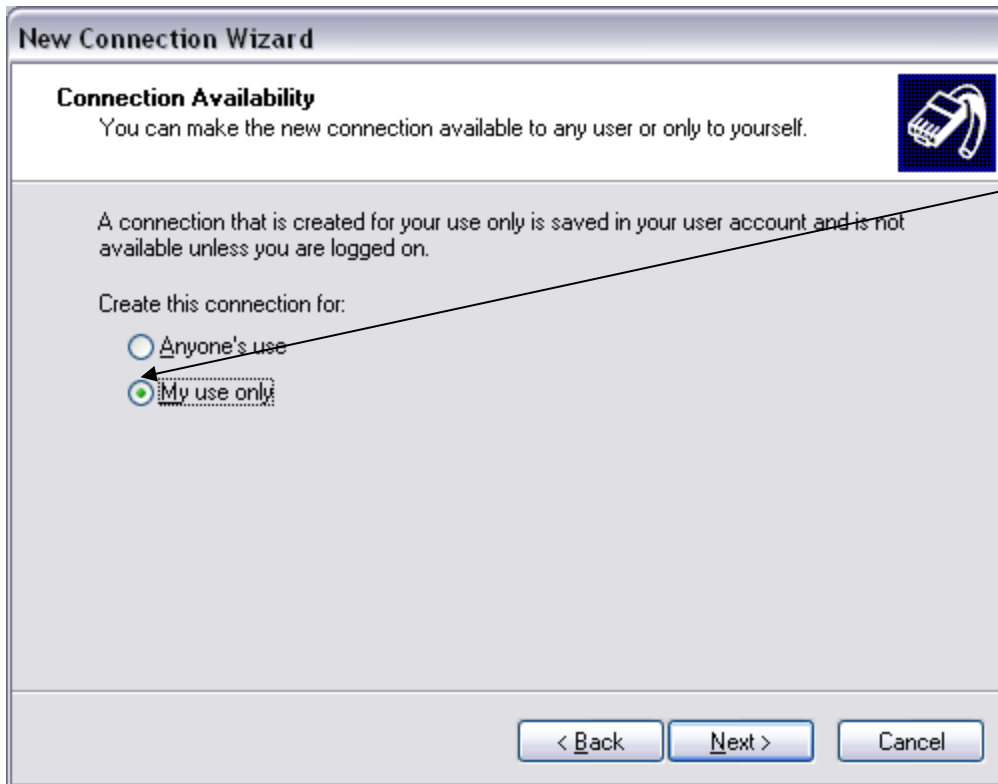
If you get this screen select Do not Dial the initial connection, click next



Now enter the IP address you have been provided, then click next to continue



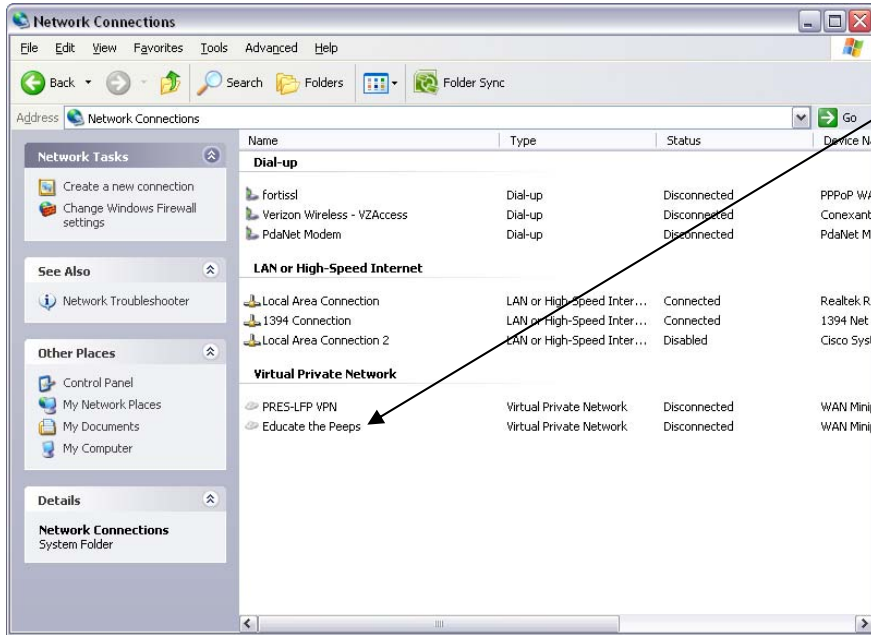
Here click on My use only then click next.



Now click finish to complete the setup



Back in your network connections you should now see the new VPN connection we just setup, double click it to be prompted for your login



Now enter your provided user name and password, hit connect when done



This complete the Windows XP VPN creation tutorial.

